

# CERTIFICATE OF LOCATION OF GOVERNMENT CORNER

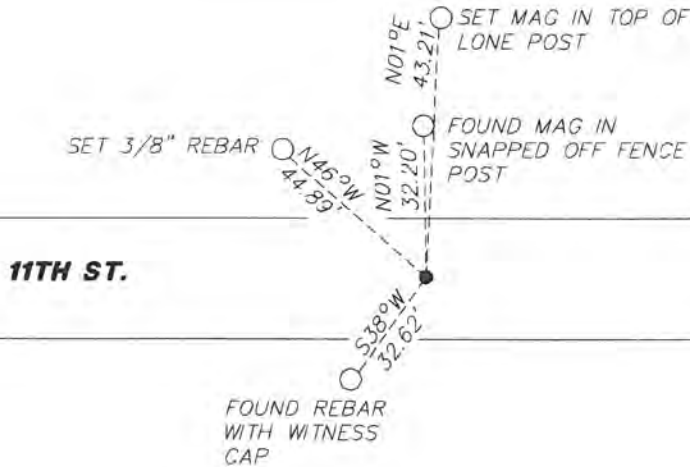
NORTH QUARTER \_\_\_\_\_ Corner of Section 34, Township 105N, Range 42W

5th Principal Meridian, State of Minnesota, County of Murray.

At the corner location shown on the sketch:

- On 05/16/19 found a capped monument stamped "LS 42604" down 0.5'  
DATE
- left monument as found       lowered monument       removed monument (explain)
- On \_\_\_\_\_ placed a \_\_\_\_\_  
DATE

SKETCH OF REFERENCE TIES



Statement of evidence for this corner location is on back of this page.

I hereby certify that this document was researched and prepared by me or under my direct supervision and that I am a licensed Land Surveyor under the laws of the State of Minnesota.

Signature [Handwritten Signature]

Date 0/27/19 License No. 49563

Title:

- Land Surveyor       Professional Engineer
- County Surveyor       County Engineer

OFFICE OF THE COUNTY RECORDER

County of Murray

I hereby certify that this document was filed in the Co.

Recorder's office at 9:00 A. M. on the 8<sup>th</sup> day of JULY A.D. 20 19

County Recorder Evelyn Larson

by \_\_\_\_\_, Deputy

DOCUMENT NO. —

### Statement of Evidence:

North Quarter corner of Section 34, Township 105 North, Range 42 West, 5th Principal Meridian, Murray County, Minnesota.

2012 Murray County, found a land surveyor's pin LS42604, down 4" in centerline of road.

2013 Zieske Land Surveying located an iron monument.

2017 Zieske Land Surveying located an iron monument.

2019 Westwood Professional Services searched area and found a capped rebar stamped "LS42604" down 0.5'. Fits centerline to an E/W road and fits occupation to a fence line to the North and field line to the South. Found 2 ties and set 2 ties.

Analysis of the recovered data, field evidence and survey measurements, indicates that the monument found is the correct perpetuation of this corner. For additional information concerning this corner please contact Westwood Professional Services.